



The New Generation of  
**YARD/TERMINAL TRACTORS**



**YT SERIES: YT193/203/223**  
**RT SERIES: RT223/283/323/403**

# YT193 / YT223

## Next Generation Tractors



### Operator Compartment:

1. Great visibility with large, unobstructed glass areas. No high mounted emissions equipment on the side to block visibility.
2. Fingertip Controls (FNR) and 5th Wheel Controls are easily accessible when backing up. The operator doesn't have to reach for the dash.
3. 5-in digital operator interface gives driver real-time operational feedback (also troubleshooting access and history downloads)
4. Multi-Position Comfort Heated Seat & 3 point seatbelt: The seat cushion extends forward to support longer legs and larger operators.
5. Overhead storage compartments with retention/spill guards
6. 12 Volt accessory socket, air horn & cup holders
7. Robust heat, A/C and defrost with multiple vents and multiple speed fan.
8. Fingertip door release latch is easily actuated
9. Wide angle heated mirrors mounted on heavy stands to reduce vibration.



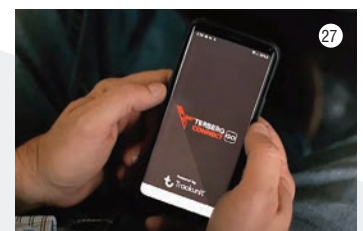
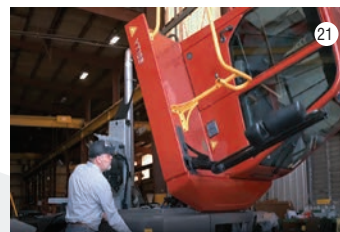
### Ease of Access for Operator Work Cycles:

10. Low First Step: The truck has step access on both sides. Ease of entry and exit is very important as operators climb on and off all day.
11. Right Side Access Platform with Safety Rails: Right side access to cab is much easier than climbing over the seat from the rear.
12. Operator cabin is FOPS/ROPS compliant
13. All cabin handrails painted Safety Yellow (Yellow RAL 1003)
14. Rear cabin protection bar is standard. (Full Headache Rack is available)
15. Emissions Components are located behind cab
16. High mount air intake filter eliminates breathing dust around the tires.
17. Slip resistant ingress/egress steps, hose access areas and plate on 5th wheel frame.
18. Slip resistant integrated tool box located just below hose connection area
19. Air Ride Suspension for Cab (Dual Air Bags)
20. Light Package: High intensity head lights, rear cab mounted LED work lights and reverse LED back-up light



### Drivetrain / Maintenance and Service:

21. Cab tilts open (with electric motor) past top dead center to safely expose the entire engine and drivetrain area
22. Wheel well mud guards remove with 4 simple pins to enhance drivetrain access when needed
23. Lower dash panel removes without tools to expose fuse panel and cab fresh air filter (integrated fuse diagram)
24. Entire dash removed with a few simple screws to expose color and number coded wiring for easy service from the top.
25. Hydraulic fluid site glass (exterior mounted for ease of visibility)
26. Oil dipstick is remote located to exterior (no need to tilt open cab for access)
27. TERBERG Connect Telematics remote fleet monitoring with 5-year access plan





# New Generation of Yard/Terminal Tractors

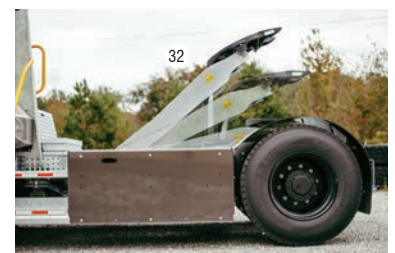
## TERBERG YT193 / YT223 SPECS

- ▶ GCW YT193: 165,000 lbs \*
- ▶ GCW YT223: 198,000 lbs \*
- ▶ Driveline: 4 x 2
- ▶ YT193: Cummins B6.7-190 hp Tier4F
- ▶ YT223: Cummins B6.7-225 hp Tier4F
- ▶ Transmission: Allison 3000 (4/5F-1R)
- ▶ Front Axle Capacity: 24,250 lbs @12 mph
- ▶ Rear Axle Capacity: 66,000 lbs @12 mph \* Depending on how equipped and operating conditions
- ▶ 5th Wheel: Terberg cast steel plate 2 in
- ▶ 5th Wheel Lifting Capacity: 80,000 lbs \*
- ▶ Lowest 5th Wheel Height \*
- ▶ Seat Forward Facing



### Chassis & Drivetrain:

- 28. Fully galvanized rust resistant frame with Gross Combined Weight (GCW) of 165,000 lbs (YT-223 GCW 198,000 lbs)
- 29. 130" wheelbase increases operator comfort (optional wheelbases of 122" and 138" are available)
- 30. Hydraulic steering allows steering angles up to 50 degrees for a tight turning radius
- 31. Holland 2" 5th wheel with a lift capacity of 80,000 lbs
- 32. Dual single-stage 5th wheel cylinders with 20" of lift (65" total lift from ground). Additional lift heights are available at 78" & 87"
- 33. 3-Piece Bumper (replace damage on one side or the other without replacing the entire front piece)
- 34. Cummins 190 hp Tier 4 Final Diesel Engine (YT-223 has Cummins 225 hp)
- 35. 6-Speed Allison Transmission with Lock-Up (more efficient on long runs)
- 36. Engine/Transmission Protection Systems (auto engine stop on low oil pressure, low coolant, and high temp)
- 37. High efficient cooling system, with stacked cooling segments (intercooler, engine cooler, transmission cooler)
- 38. Viscous cooling fan controls fan speed in direct proportion to engine cooling needs.
- 39. Noise isolation material around engine and underneath the cabin (reduces noise inside and outside the cabin)
- 40. Terberg 11.98:1 ratio purpose built rear axle with differential lock (optional ratio's/limited slip axles available)
- 41. Mudflaps and mudguards on front and rear axles
- 42. Reverse actuated warning alarm





# YT203 EV

## Fully Electric Yard/Terminal Tractors



The performance of the new electric drive system is comparable with that of diesel engines and the large battery option offers a significantly greater operating range. Additionally, the new battery technology has an extended temperature range and can be used worldwide in both very cold and warm climates.

**Modular & Multi-functional:** Terberg developed the new generation electric drive as a multi-functional, modular concept. This makes it easy to apply this EV system in a range of vehicles. Depending on a vehicle's application, Terberg can easily change components such as the traction motor, hydraulic pump or energy source, with minimal effort and redevelopment.

**Low Maintenance Costs:** The electric drive has fewer moving parts compared to a diesel engine and the previous EV generation. This contributes to the lower maintenance costs. The multi-functional design of the tractor and the EV system gives mechanics good access to components. All this helps to reduce downtime for maintenance.

**Choice of Battery Capacities:** High duty cycle applications will benefit from a battery with a higher capacity, resulting in a longer range. Customers with lower duty cycle operations and more opportunities to charge the vehicle during the day can opt for a smaller battery pack, at a lower price.

**Certified Batteries & Vehicle:** The new battery and complete vehicle comply with the ECE-R100 rev. 2 regulation. This regulation is a key European requirement for the approval of electric vehicles. The tests cover aspects such as resistance to vibration, acceleration, impact, thermal loads, fire, short-circuits, and electrical safety.

**Suitable for Warm & Cold Climates:** The Thermal Management System (TMS) controls the temperature of the batteries, which therefore can be used at any ambient temperature between -22°F and +122°F. This makes the Terberg YT203-EV suitable for use anywhere in the world!

**High Performance:** The new electric motor in the YT203-EV has a performance similar to a tractor with a diesel engine with low noise and vibrations. Additionally, the electric motor avoids CO2 and NOx emissions at the point of use.

**Regenerative Braking:** The new EV drive has a comprehensive regenerative braking system. Instead of being wasted, the braking energy is fed back to the batteries. The regenerative braking function is controlled by the accelerator pedal, so the driver can drive and brake with one pedal. Higher axle loads result in more regenerative braking.

**Universal Charging System:** The YT203-EV uses DC chargers and can be charged at standard charging stations. The new, universal charging connector complies with the CCS1.0 automotive standard. This means the vehicles can be charged using any charger with a CCS1.0 connection and the appropriate specifications. Customers can use a universal charging infrastructure for Terberg and other vehicles.

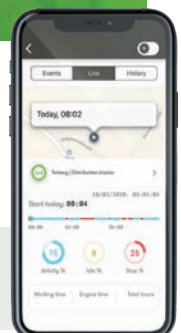
### BASIC SPECIFICATIONS:

- Driveline: 4 x 2
- GCW 158,000 lbs - 256,000 lbs (depending on axle ratio and operating conditions)
- Battery pack combination options up to 222 kWh
- Charger connector complies with CCS1.0 automotive standard
- Regenerative braking

- Batteries and vehicle comply with ECE-R100 rev. 2
- Suitable for worldwide operation -22°F up to +122°F
- Traction motor: ZF CeTrax
- Front axle capacity: 24,000 lbs @12 mph
- Rear axle capacity: 84,000 lbs @12 mph
- 5th wheel: Terberg cast steel plate 2"
- 5th wheel lifting capacity: up to 80,000 lbs\*

- Lowest 5th wheel height \*
- Forward-facing seat
- Left and right-hand drive available
- Terberg Connect Tractor Telematics

\* Depending on how equipped and operating conditions





# Fully Electric Yard/Terminal Tractors

## TERBERG YT203 EV BENEFITS

- ▶ Battery Pack Combinations Up To 222 kWh
- ▶ Motor Performance Similar To Diesel
- ▶ Suitable For Cold And Warm Climates
- ▶ Increased Capacity For A Longer Range
- ▶ Very Low Maintenance Cost





# RT223/283/323

## 4x4 RORO Tractors

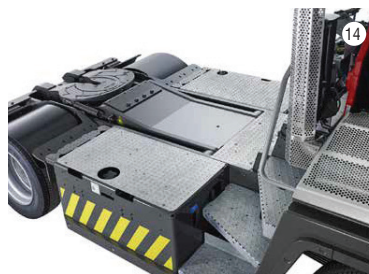


### Handling Heavy Cargo with Total Confidence

#### Proven Design Features:

1. 4x4 and 4x2 variations available
2. Gross Combination Weights (GCW) up to 364,000 lbs \*
3. Fifth wheel lifting capacity up to 78,000 lbs \*
4. The fully welded chassis is a perfect combination of modular construction, strength, weight and easy access
5. The spacious and strong, all-steel cab structure with air-ride suspension (fully FOPS and ROPS tested) ensures maximum driver protection and comfort
6. The large rear window allows for excellent driver visibility
7. The curved windscreen ensures an excellent view forward
8. Rear sliding door, provides easy cab access from either side
9. Transmission oil level
10. Coolant level
11. Access to electrical system
12. Easy topping up engine oil
13. Over-riders for extra safety (optional)
14. Galvanized cover plates with anti-slip surface
15. Sliding and folding, trainer seat (optional)
16. Ergoturn® 180° swiveling seat
17. Electric cab tilt (optional)
18. Vibration resistant side mirrors
19. Based on proven designs, ensuring reliability and lowest operating and maintenance costs
20. High quality components, available throughout the world
21. Designed for RORO operations in ports, operating in RORO vessels and negotiating steep ramps
22. Widely used in industry because of their robust design and powerful driveline

\* Depending on how equipped and operating conditions





# RORO & INDUSTRIAL TRACTORS

## TERBERG RT223 / 283 / 323 SPECS

- ▶ **RT223:** Volvo TAD870VE-215 hp (Tier4F)
  - ▶ **RT283:** Volvo TAD872VE-282 hp (Tier4F)
  - ▶ **RT323:** Volvo TAD873VE-315 hp (Tier4F)
  - ▶ RT223 GCW: 330,000 lbs \*
  - ▶ RT283/323 GCW: 364,000 lbs \*
  - ▶ Driveline: 4x4 (optional 4x2)
  - ▶ Planetary Hub Axles: Kessler
  - ▶ Transmission: ZF 6WG211 (6F-3R)
  - ▶ Front axle capacity: 36,000 lbs @12 mph
  - ▶ Rear axle capacity: 48,000 lbs @12 mph
  - ▶ 5th wheel: Terberg cast steel plate 2 in
  - ▶ 5th wheel lifting capacity: 78,000 lbs \*
  - ▶ Lowest 5th wheel height: 38 in
  - ▶ Ergoturn® 180° swivelling seat
- \* Depending on how equipped and operating conditions

The 4x4 drive Terberg RoRo Yard Tractors with Ergoturn® 180° swivelling seat are designed for operating in RoRo vessels with steep ramps and in industrial yards because of their robust design and powerful driveline.

A 4x2 drive model (TT223) is available for applications that do not require 4x4 drive and do require a 180° swivelling seat.





# RT403

## 4x4 Heavy Duty Tractors

### MOVING HEAVY LOADS

Terberg industrial heavy duty tractors are used in many industries for transporting loads of up to 442,000 lbs Gross Combined Weight (GCW).

Our industrial customers appreciate the robustness and reliability of our products. The ease of maneuvering and the swiveling seats are particularly useful when working in crowded yards or inside buildings.

### 4x4 HEAVY DUTY TRACTOR

#### Design Features:

1. Convenient, comprehensive access to vehicle information without the need for a laptop computer or other equipment
2. Hydraulic oil level sight glass
3. Rear axle air suspension for extra driver comfort (optional)
4. Anti Skid Surfaces
5. Joystick in arm rest (optional)
6. Ergoturn 180° swivelling seat: Seat & pedals are one rotating unit
7. The cab interior provides a high degree of comfort and an excellent working environment for the driver
8. Easy cab access from either side of the tractor
9. Raised high positioned air inlet with additional cyclone filter (optional)
10. Easy maintenance access
11. Front cover is raised manually / automatically
12. All-steel, cab structure can tilt up to 71 degrees
13. Sound insulation ensures low inside / outside noise levels





# 4x4 HEAVY DUTY INDUSTRIAL TRACTORS

## TERBERG RT403 SPECS

- ▶ Driveline: 4 x 4
- ▶ GCW: 442,000 lbs \*
- ▶ Engine: Volvo TAD1172VE-388 hp Tier4F
- ▶ Transmission: ZF 6WG310 (6F-3R)
- ▶ Front axle capacity: 44,000 lbs @12 mph
- ▶ Front axle capacity: 56,000 lbs @6 mph
- ▶ Rear axle capacity: 99,000 lbs @12 mph
- ▶ Rear axle capacity: 106,000 lbs @6 mph
- ▶ 5th wheel: 2 in Cardanic cast steel plate
- ▶ 5th wheel lifting capacity: 100,000 lbs \*
- ▶ Lowest 5th wheel height: 53 in
- ▶ Ergoturn® 180° swivelling seat

\* Depending on how equipped and operating conditions

The Terberg RT403 is designed for extremely demanding applications in ports, steelworks and other industrial plants. Its fifth wheel lifting capacity of 99,000 lbs and heavy-duty chassis and power-train design make the RT403 the perfect choice for the steel industry, extremely heavy RORO operations and handling MTS trains.

Depending on the application and operating environment, the GCW can reach up to 442,000 lbs.



14. The fully welded chassis is a perfect combination of (and ROPS tested) strength, weight and easy access
15. Heavy duty Cardanic 2" & 3.5" fifth wheel with lift capacity of up to 99,000 lbs
16. Light Package: High intensity head lights, rear cab mounted LED work lights and reverse LED light
17. Constant 4-wheel drive
18. Planetary hub axles (Kessler)
19. Volvo engine
20. ZF transmission





# TERBERG - TAYLOR OPTIONS



**Steel Mudguards**

Removable steel mudguards. Fitted with rubber mud flaps and LED side marker lamps (optional items).



**Cabin Protection Frame**

To further protect the driver, a protection frame can be installed at the rear of the cabin.



**Additional Handrails**

Where trailer dimensions allow, an extra handrail can be installed.



**LED Headlights**

LED headlamps with day time running lights. (Shown with optional side marker lamps.)



**RDT Mounting**

Ram type mounting available for various bracket types. Optional 12 24V wiring available.



**Electric Window**

The standard horizontal sliding window can be upgraded to a vertical electric powered window.



**CD Player/Radio**

CD Radio with Bluetooth connection. Speakers mounted in roof panel.



**Adjustable Steer Column**

An adjustable steering column can be ordered with reach and rake adjustment.



**Trainer Seat**

Folding passenger seat for safe training. Supplied with lap belt for safety.



**Speed Limiter**

Set speeds depending on unloaded/loaded, over a certain fifth wheel load, or via a geofence perimeter.



**Power Connection**

Various connection points available for powering of various devices. USB points are also available.



**Jump Start Connection**

A jump start connection can be installed at the front of the chassis or on the air hose mounting bracket.



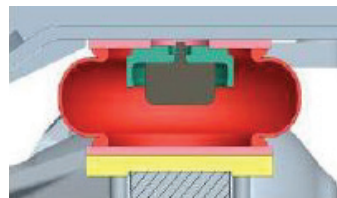
**Additional Side Door**

This door can be ordered with horizontal sliding window or an electric vertical window.



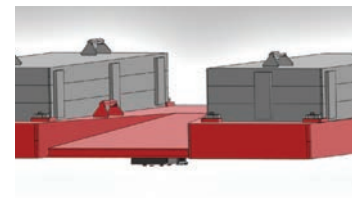
**Heavy Duty Tow Coupling**

Rockinger type tow couplings are available.



**Air Suspension**

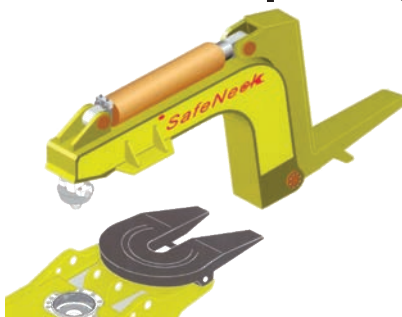
Can be added to the rear axle. This is also supplied with an air release switch to lower the ride height.



**Heavy Haul Counterweights**

For operating Multiple Trailers or pulling heavy draw-bar trailers (RT series only)

## SafeNeck® Improving Safety, Increasing Loads



The unique Terberg SafeNeck® option further increases safety and capacity when handling heavy trailers on ramps.

The patented SafeNeck ensures optimum weight distribution between the front and rear axles which can increase permissible payloads by up to 250%. (RT Series Only)



# VARIOUS INDUSTRIAL APPLICATIONS:

# TERBERG - TAYLOR APPLICATIONS





WHERE SPECIAL COMES AS STANDARD



**TERBERG**  
**TAYLOR AMERICAS**

SUPPORTED BY



**Sudden Service, Inc.**  
3637 North Church Ave., Louisville, MS 39339  
**662-773-8056**  
[www.taylorsuddenservice.com](http://www.taylorsuddenservice.com)